

WIMS

Warehouse Inventory Management Solution

Documentation

Installation Guide

We have added the installer for easy installation experience and it can be accessed by adding `/install` at the end url.

Step 1: Preparation

Standard License?

If you have purchased standard license, please run install dependencies before following these steps by running `composer install`

Requirements

PHP 8.0.3+ & MySQL 5.7.8+, Installer will check other requirements

Installing on cPanel?

Please don't upload the files to `public_html` directory but create `wims` directory one level above (outside `public_html`) in main directory that is not accessible by public and then upload the files to this `wims` directory. Lastly create subdomain that points to the `wims/public` directory. Now replace the `yourdomain.com` below with `subdomain.yourdoamin.com`

If you need to install in as main domain `yourdomain.com` but not subdoamin `subdomain.yourdoamin.com`, you still follow the above instructions and then create symbolic link for `public_html` `ln -s /wims/public /public_html`. You can check with your host about this and tell them that you want to secure Laravel installation. If that is no possible then you can upload to `public_html` folder and apache `.htaccess` will redirect traffic to the public folder.

Installing locally?

Please add a virtual host that should point to public directory in wims `full/path/to/wims/public` directory then access the virtual host in browser.

You can access the installer by adding `/install` at the end of your domain i.e,

- `https: // yourdomain.com / install` for main domain installation
- `https: // yourdomain.com / subfolder / install` for sub directory installation

- `https://subdomain.yourdomain.com/install` for sub domain directory installation

You will need to prepare these details (mentioned at installer page)

1. License details:

- Purchased by (**username**/email)
- Licence Key / Purchase code

2. Database server details:

- Database Hostname
- Database Name
- Database Username
- Database Password **User must have all the privileges on the database**

Step 2: Licence Agreement

Please read the license details and accept.

Step 3: Pre-Install Checklist

If there is any server config change required, you will see the details on this page. You need to resolve these before proceeding to next step. If you are not sure about any issue, simply Google it or check with your host/server administrator.

Step 4: Verify your License

Please fill **username** and **license key/purchase code** and click next to verify, if you set error, please double check your purchase details and try again. If still same, please email to support@tecdiary.com with your **license key/purchase code**, we will check and update you.

Step 5: Installation Configuration

Please fill the form with your database server details **hostname**, **database**, **username** and **password**.

Please make sure that

- database is empty
- the **hostname** is correct
- user has all the privileges on the database

Step 6: Create User Account

Please fill the form to create owner user account.

Step 7: Finalize Installation

We are almost done, it's time to finalize the installation. If you need some demo data, you can generate from this page before pressing the **Finalize** button.

You must press the **Finalize** installation button to complete the installation.

Can I start again?

Yes, if there is any issue on any step and you can't pass then you can cancel and start over again with new database or settings.

Step 8: Create Storage Link

You can visit the following url to create storage link

http://yourWIMURL/commands/storage_link?key=youLicenseKeyOrPurchaseCode

Otherwise you can run the following command from main WIMS folder in your terminal.

```
cd path/to/your/wims && php artisan storage:link
```

After Install

After install, please add system level data as following:

1. **Email Config** update .env for email config
2. **Settings** update settings
3. **Warehouses** (add at least one)
4. **Categories** (add at least one)
5. **Items** (add at least one)
6. **Contacts** (add at least one)

Installation Service

We recommend that you perform installation service yourself.

In case you want to request installation service, please open ticket for *Installation Request* at [Support Portal](#) (installation fee \$20 - \$40).

Please provide your `license key`, `desired domain/subdomain/path` & `server details` (access to files and database). We will required 1 working day to complete the installation. Once done, you will replied with all the details to get you started with your new business application.

In case we have any server configuration issue, we might need to work with your host/server admin to resolve it and this time doesn't count in the installation deadline.

If you have any question or require further information, you can email to support@tecdiary.com

Update Guide

Please backup database and all files/folders before starting to update.

Update Instructions

Please download the latest file and update the following files & folder of your WIMS install:

- `app/`
- `database/`
- `public/`
- `resources/`
- `routes/`
- `vendor/`
- `composer.json`
- `composer.lock`

Now you can visit the following url to run the migration

`http://yourWIMURL/commands/update_database?
key=youLicenseKeyOrPurchaseCode`

Otherwise you will need to update the database by running the following command from main WIMS folder in your terminal.

```
cd path/to/your/wims && php artisan migrate
```

Request Update

We encourage you to try updating yourself. However if you need update service, please open ticket for *Update Request* at [Support Portal](#) (update fee \$20 - \$40) and provide your `license key` & `server details` (access to files & database). We will required 1 working day to perform update.

Frequently Asked Questions

We have tried to list some frequently asked questions. This page will be updated time to time with new FAQs.

General

How many items can be managed with this Warehouse Inventory Management Solution?

You can have any number of items, it all depends on your machine/server.

Can I modify the item?

Yes, as per license and at your own risk. We don't offer support for modifications and modified versions.

Can I sell the item?

No. You can't sell the item under any license. However if you have purchased Extended license, you can use it for SaaS (Software as a Service) or can create an end product that can be installed unlimited times. You will need separate license for each SaaS use or end product.

Can I manage multiple warehouse/godown?

Yes, if you have installed it on live server you can manage multiple warehouse with single installation. If it's install with localhost, then I am not sure, unless you can access it from other warehouses.

Can I white label it to have my company name and logo?

No, there is no option to change icon. Please update the Name in settings, you can upload the warehouse logo (will be used on check in/out, adjustment & transfer view pages).

How can I change the warehouse logo?

Please upload the new logo by editing the warehouse.

How can I translate into other language?

Please duplicate `resources/lang/en.json` then translate it. Once translated, you can edit `resources/js/Core/i18n.js` to import the language file. Lastly run `npm i` && `npm run prod` to build the application.

How can I disable/enable Weight tracking?

You can disable/enable weight tracking from settings page. If enable, all the items with track weight option will be sync on new orders.

Can I install this item on localhost?

Yes, you can install this item on localhost with any web platform xampp, mamp, lamp, wamp or easyphp. Internet connectivity is required for installation to verify the purchase. Once installed, you can use it without Internet.

Can I use it offline if I have installed it on live server?

WIMS has option to cache the get requests only. You won't be able to post any data but if you have visited the page before and Internet is down, you will be able to view the page (it will be loaded from cache).

Will I get the full source code?

Yes, for Standard and Extended Licenses. For Regular license, you will only get back-end code and won't be able to modify the front-end.

How can I setup cron job?

You can setup cron job as following:

```
* * * * * cd path/to/your/wims && php artisan schedule:run >> /dev/null 2>&1
```

If you need help, please check with your host and ask them how you can setup cron job for Laravel, docs can be found at <https://laravel.com/docs/scheduling>

Why I need to set cron job?

Cron job need to be set to generate recurring check in/out and send low stock notifications.

Users

How many user roles are available?

WIMS has 1 default **Super Admin** Role that can perform all actions. However you can add new roles and set permissions as you need.

Where can I assign role to user?

While adding/editing the user, you have the option to select roles.

Can I add new user role?

From Add Role link under Users menu.

Errors

Why am I getting CloudFlare Security or Blank error on verification while installation the item?

If you are not getting any error but blank red alert or CloudFlare Security error mean your request is not reaching to verification server. Please check that your server is not blocking the curl request and secondly there are chances that CloudFlare might be challenging your request due to various reasons. Please check with your host and request them to white list CloudFlare IPs <https://www.cloudflare.com/ips> Updating your Anti-Virus and Browser might help. You can check with your host too.

You can try different host and/or install it locally with any web platform **easyphp** / **lamp** / **mamp** / **wamp** / **xampp**.

Why am I getting 500 Internal Server Error?

You shouldn't get such error if the server requirements were fine while installing the item.

500 are server internal errors and you can check your server error log to get more details of the error, if you are on live server and not sure, you can check with your host. Once you have the error details please post on support portal (<https://tecdiary.net/support>) with details, we will check and suggest you the solution.

You can check the Laravel logs in **storage/logs** folder too.

MySQL cannot connect via "localhost" but only "127.0.0.1"?

MySQL will try to connect to the unix socket if you tell it to connect to "localhost". If you tell it to connect to 127.0.0.1 you are forcing it to connect to the network socket. So probably you have MySQL configured to only listen to the network socket and not to the file system

socket.

What exactly is wrong with your unix socket is hard to tell. But I recommend you to [read this page](#) on the MySQL reference guide.

Why I can't send emails?

Please double check your email configuration in .env file.

Why I am getting db error and can't login?

Please make sure that your database server is up and running, then check .env file in main directory for database configuration.

Why some items are missing from order when I add 50+ services?

There is no restriction in WIMS code on the number of order services. If you are having such issue, please check your PHP configuration file (php.ini) for `max_input_vars` and set it to higher number i.e, 20000. You might need to increase `max_input_time` and `max_execution_time` too.

General Guide

Warehouse Inventory Management System is designed & developed to suit the warehouse/godown/store management needs. We have tried to keep design and layout simple so that everyone can easily get going. The design is responsive as we have added the progressive web app feature to it. WIMS look quite fine on all screen sizes.

All the tables are filter-able/& search-able with responsive styles, on the small screens, you can scroll to left to see data.

Dashboard

Dashboard has number of Checkin, Checkouts, Items & Contacts. Check in/out are for this month with comparison increase/decrease of previous month.

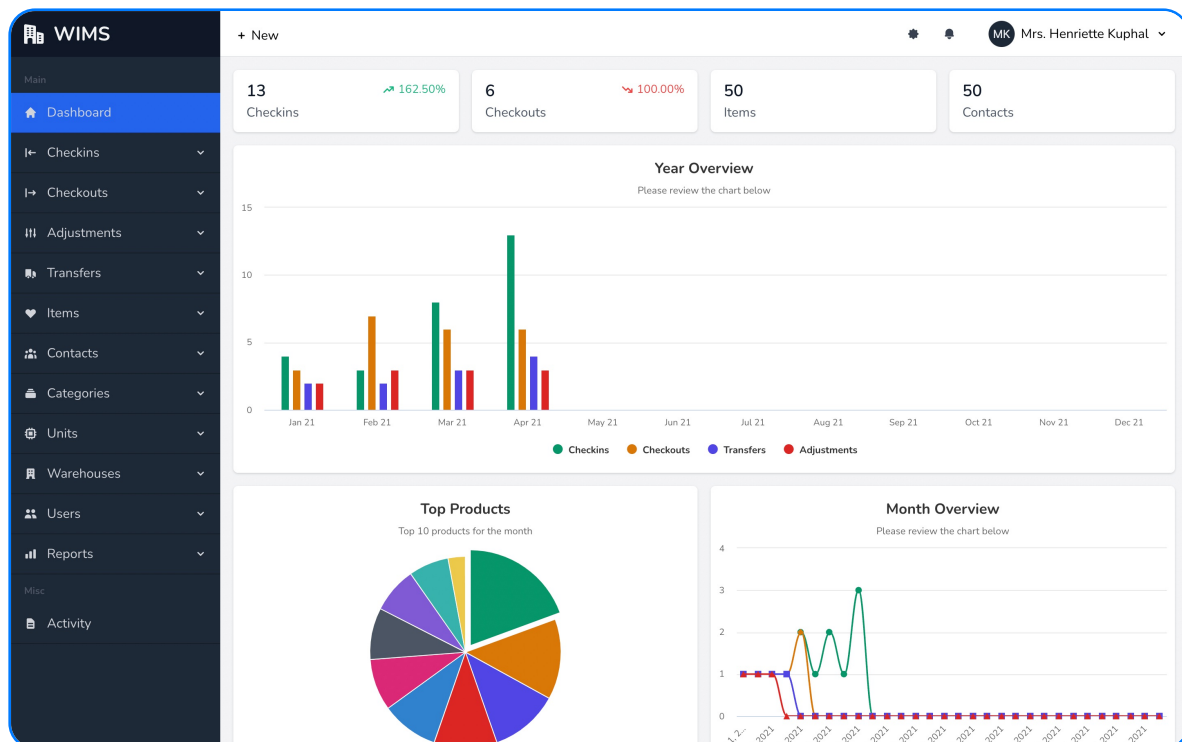
Dashboard has 3 charts for year & month overview of the checkins, checkouts, transfers and adjustment. Third chart is for top items and these are calculated based on movement. The charts are graphical representation of the day's and month's inventory records. Charts have legend at bottom to enable/disable any field checkins, checkouts, transfers or adjustments.

We would like to listen your feedback to improve and make dashboard more informative.

Activity Logs

WIMS will automatically logs all the activity in your app for super admin to review or audit any case.

Screenshots



The Items page displays a table of items with the following columns: Name, Options, Stock, and Relations. The table contains four items:

| Name | Options | Stock | Relations |
|--|--|--|--|
| Test Item 50 Code: TI50 SKU: 92f81ab0-229b-30be-9b91-b028ff882cfa Symbology: CODE128 | Track Serials ✓ Track Weight ✗ Track Quantity ✓ Alert on: 20.00 | Category 3 Unit: Piece Variants: Color: Red, Green Size: S, M, L | Warehouse 9: 1.00 Warehouse 3: 0.00 Warehouse 1: 0.00 Warehouse 6: -1.00 |
| Test Item 49 Code: TI49 SKU: bba23f69-c11a-3843-b6d3-df1cd24dc4ff Symbology: CODE128 | Track Serials ✗ Track Weight ✓ Track Quantity ✓ Alert on: 10.00 | Category 261 Unit: Piece | Warehouse 9: -4.00 (-4.00) Warehouse 3: 0.00 (0.00) Warehouse 1: 0.00 (0.00) Warehouse 6: 0.00 (0.00) |
| Test Item 48 Code: TI48 SKU: 0334fff7-7bbc-3c8d-909e-ec6ce9522be0 Symbology: CODE128 | Track Serials ✗ Track Weight ✓ Track Quantity ✓ Alert on: 20.00 | Category 495 Unit: Piece | Warehouse 9: 0.00 (0.00) Warehouse 3: 9.00 (9.00) Warehouse 1: -3.00 (-3.00) Warehouse 6: 0.00 (0.00) |
| Test Item 47 Code: TI47 | Track Serials ✓ | | Warehouse 9: 0.00 |

Items, Categories & Units

Items are the main products that you want to track. These can be categorized and have assigned units of measurement.

Items

Items have the following fields:

1. Name
2. Code
3. Barcode Symbology
4. SKU
5. Category
6. Subcategory
7. Unit
8. Rack Location
9. Details
10. Track Weight
11. Track Quantity
12. Alert Quantity
13. Track Variants
14. Variants

System will set item stock to 0 for each warehouse and generate all variations while adding the item. You can add check in after items to set the initial inventory/stock.

Items page list all the data for the items including the warehouse stock. Table can be searched. Actions column has menu links to view the stock trail/movement, view full page item details with all variations stock, edit and delete item.

Table remembers the filters on page load. You will need to reset to forget filters to load normal listing.

Item Trail is to track the item movement on the period of time. You can select the start and end date to check the stock at any period of time.

Import from Excel

You can import the bulk items with excel file.

Categories

Categories have been added so that you can manage the item easily. You can assign category & subcategory to items.

Categories have the following fields:

1. Name
2. Code
3. Parent Category (only required if you want to add subcategory)

Categories listing table is similar to items with filter/search options. Filters are remembered on page load as same as other listing tables.

Import from Excel

You can import the bulk categories with excel file.

Units

Units (units of measurement) have been added so that you can check in/out quantity in different units.

Categories have the following fields:

1. Name
2. Code
3. Base unit (optional to assign conversion)
4. Operator (for conversion formula)
5. Operation Value (for conversion formula)

Units listing table is similar to categories with filter/search options. Filters are remembered on page load as same as other listing tables.

Import from Excel

You can import the bulk units with excel file.

Inventory Movement

Warehouses take stock in as checkins while sends out as checkouts.

Checkins

Checkins are the incoming inventory/stock to increase the items' quantity/weight. Checkin can be added for a single warehouse with multiple items and has following fields

1. Date
2. Reference
3. Contact
4. Warehouse
5. Items with quantity/weight
6. Attachments
7. Details
8. Draft (if the checkin is still draft)

Draft checkin will not be added to the inventory but will be kept as record. You can edit them any item to finalize and once you unselect the draft and submit the checkin, it will sync the items' inventory/stock.

Checkin listing page has the checkin data with filter/search option with view, edit and delete action buttons. Filters are remembered on page load as same as other listing tables.

Checkouts

Checkouts are the outgoing inventory/stock to decrease the items' quantity/weight. Checkout can be added for a single warehouse with multiple items and has following fields

1. Date
2. Reference
3. Contact
4. Warehouse
5. Items with quantity/weight
6. Attachments
7. Details
8. Draft (if the checkout is still draft)

Draft checkout will not be added to the inventory but will be kept as record. You can edit them any item to finalize and once you unselect the draft and submit the checkout, it will sync the items' inventory/stock.

Checkout listing page has the checkout data with filter/search option with view, edit and delete action buttons. Filters are remembered on page load as same as other listing

tables.

Transfers

Transfers are the movement of inventory/stock from one warehouse to another. Transfer has following fields

1. Date
2. Reference
3. From Warehouse
4. To Warehouse
5. Items with quantity/weight
6. Attachments
7. Details
8. Draft (if the transfer is still draft)

Draft transfer will not have any effect on inventory but are kept as record. You can edit transfer any item to finalize and once you unselect the draft, it will sync the items' inventory/stock in both from and to warehouse, increase in to warehouse while decreasing out from warehouse.

Transfer listing page has the checkout data with filter/search option with view, edit and delete action buttons. Filters are remembered on page load as same as other listing tables.

Adjustments

You can adjust the item inventory for damage or any other reason. You have the adjustment type for addition (to increase the stock), damage & subtraction (to decrease the stock). Adjustment has following fields

1. Date
2. Reference
3. Type
4. Warehouse
5. Items with quantity/weight
6. Attachments
7. Details
8. Draft (if the transfer is still draft)

Draft adjustment will not have any effect on inventory as others. You can edit adjustment and once you unselect the draft, it will sync the items' inventory/stock as per type addition will increase the stock while other will decrease.

Adjustment listing page has the data with filter/search option with view, edit and delete action buttons. Filters are remembered on page load as same as other listing tables.

Alerts, Activity & Reports

Alerts & Activity

Top bar has the alerts icon that will display the warehouse list with low stock. WIMS records all user activity for you to review. The activity is saved for 1 year. If you need to change, you can edit `delete_records_older_than_days` in `config/activitylog.php`

Reports

WIMS has 4 reports along with a page for total records. There are Checkin, Checkout, Transfer and Adjustment report with option to customize them for any field.

Require Feedback

We will add more reports as we receive feedback from you.

Warehouses, Users & Settings

Warehouses

Warehouse, a building/godown where you storing goods for you business purpose like manufacturing, import/export, wholesale, transportation or any other business.

Warehouse has following fields

1. Name
2. Code
3. Phone
4. Email
5. Logo
6. Address
7. Active (if not functional you can unselect active)

Warehouses listing table as other have filter/search options. Filters are also remembered on page load.

Import from Excel

You can import the bulk warehouses with excel file.

Users & Roles

Users can login and perform the actions as per their permission. Default **Super Admin** user have all the permissions while others that you can add and set the permissions as you like. You can add role and then edit it to set permissions. You can add any number of user and assign them roles as you need. You can allow them to view/edit all (other users) records, if needed or assign them a single warehouse.

Settings

WIMS has settings for you to easily change style and set options. Email configuration is saved in the **.env** files. We haven't added settings for them as that is one time change and can be configured after installation.

